

International Expert Workshop on CITES Non-Detriment Findings

Cancun, Mexico, November 17 to 21, 2008

Working Group - Perennials

Case Study: *Panax quinquefolius*

**CITES Scientific Authority
for the United States**

**U.S. Fish and Wildlife Service
Division of Scientific Authority
Patricia Ford**



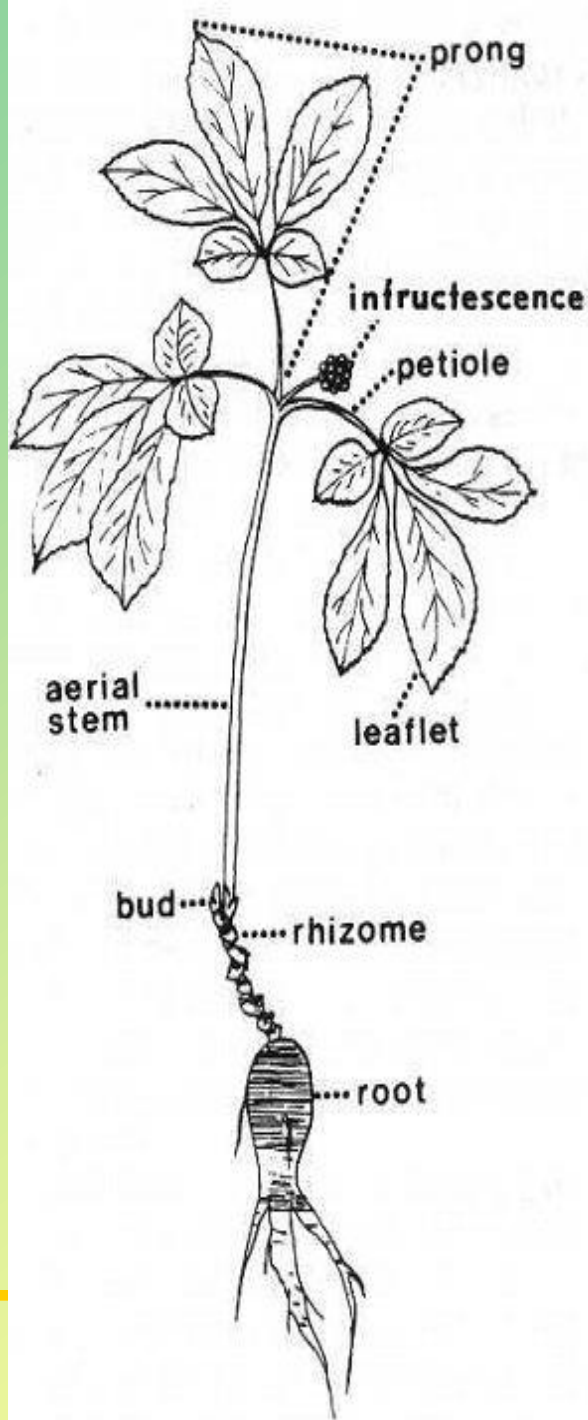
Panax quinquefolius
American ginseng






Listed in Appendix II of CITES
on July 1, 1975

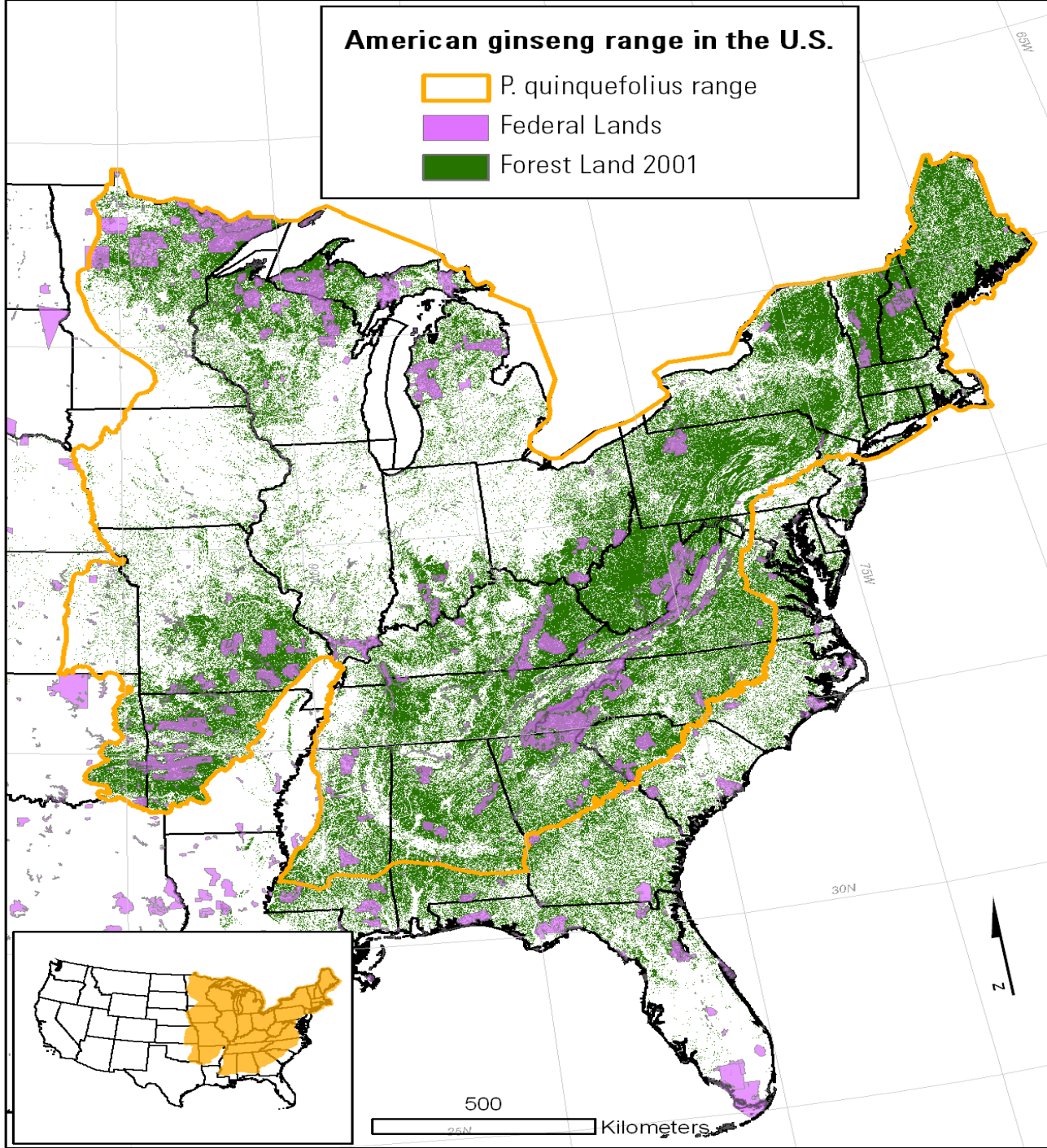


Morphology of *Panax quinquefolius*



American ginseng range in the U.S.

-  *P. quinquefolius* range
-  Federal Lands
-  Forest Land 2001





Habitat for *Panax quinquefolius* in the USA.



United States non-detriment finding for *Panax quinquefolius*

- **The U.S. Scientific Authority makes a programmatic non-detriment finding on a State-by-State basis.**
- **Not on a permit-by-permit basis for individual applicants.**



19 U.S. States are approved for the export of wild-harvested roots

- Alabama
- Arkansas
- Georgia
- Illinois
- Indiana
- Iowa
- Kentucky
- Maryland
- Minnesota
- Missouri
- New York
- North Carolina
- Ohio
- Pennsylvania
- Tennessee
- Vermont
- Virginia
- West Virginia
- Wisconsin



U.S. CITES Authorities Export Program for States

- **States must have promulgated laws and regulations for the harvest and sale of ginseng roots.**
- **States must have a management program designed to monitor and protect populations of *P. quinquefolius* from over-harvest.**



U.S. CITES Authorities Export Program for States

- **States must provide an assessment of its population and trends;**
- **Distribution of the species on a county-by-county basis;**
- **Information on the phenology of the species in their State; and**
- **Description of the types of information used to make the assessment.**



U.S. Non-detriment finding for *Panax quinquefolius*

- **The 19 approved States must submit an annual harvest report with current species' status information;**
- **The weight of the total amount of wild-harvested roots;**
- **Total amount harvested on a county-by-county basis;**
- **The average number of roots per pound; and**
- **Trends in abundance and distribution of populations.**



Information the U.S. S.A. considers for making a NDF for *Panax quinquefolius*

- **Biological life history characteristics of the species (e.g., reproductive strategy, recruitment rate, survival rate, regeneration requirements);**
- **Status of the species in the wild;**
- **Population structure, size, and trends;**
- **Genetic diversity;**



Information the U.S. S.A. considers for making a NDF for *Panax quinquefolius*

- **Areas of harvest and non-harvest;**
- **Habitat distribution (e.g., continuous, fragmented);**
- **Habitat availability and quality;**
- **Role of the species in its ecosystem;**



Information the U.S. S.A. considers for making a NDF for *Panax quinquefolius*

- **Main threats to species;**
- **Management and harvest practices;**
- **Trade data: legal and illegal trade levels; and**
- **State legislation and regulatory requirements, and law enforcement practices.**



Sources of Information

- **State annual reports**
- **Published and unpublished scientific literature**
- **Species experts/researchers**
- **Other government agencies**
- **CITES documents and trade data**
- **Private enterprises and non-governmental organizations (NGOs)**
- **U.S. Code of Federal Regulations 50 Part 23**



U.S. Non-detriment finding for *Panax quinquefolius*

- **Since 1999, only roots harvested from plants that are 5-years of age or older can be exported.**
- **Harvest has remained relatively stable overall.**



Age Determination of *Panax quinquefolius*





Contact Information

U.S. Fish and Wildlife Service Division of Scientific Authority

Telephone: 703-358-1708

Fax: 703-358-2276

E-mail: scientificauthority@fws.gov

Web: <http://international.fws.gov>

